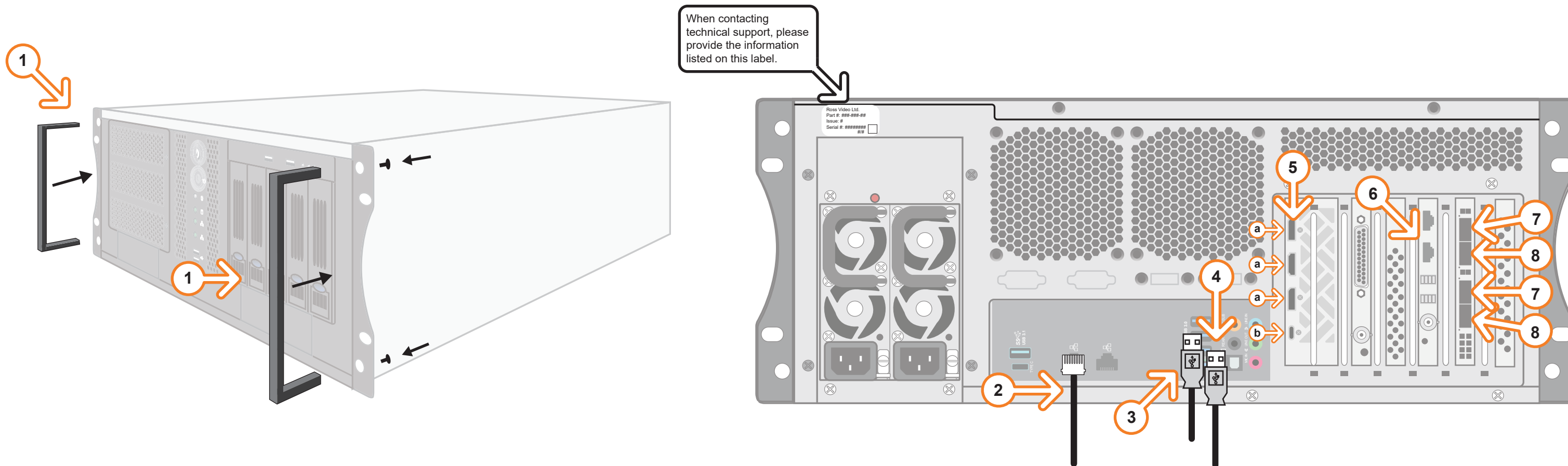


# Getting Started

⚠ CAUTION: Before you set up and operate this product, see the “Important Safety Instructions” in your Manual.



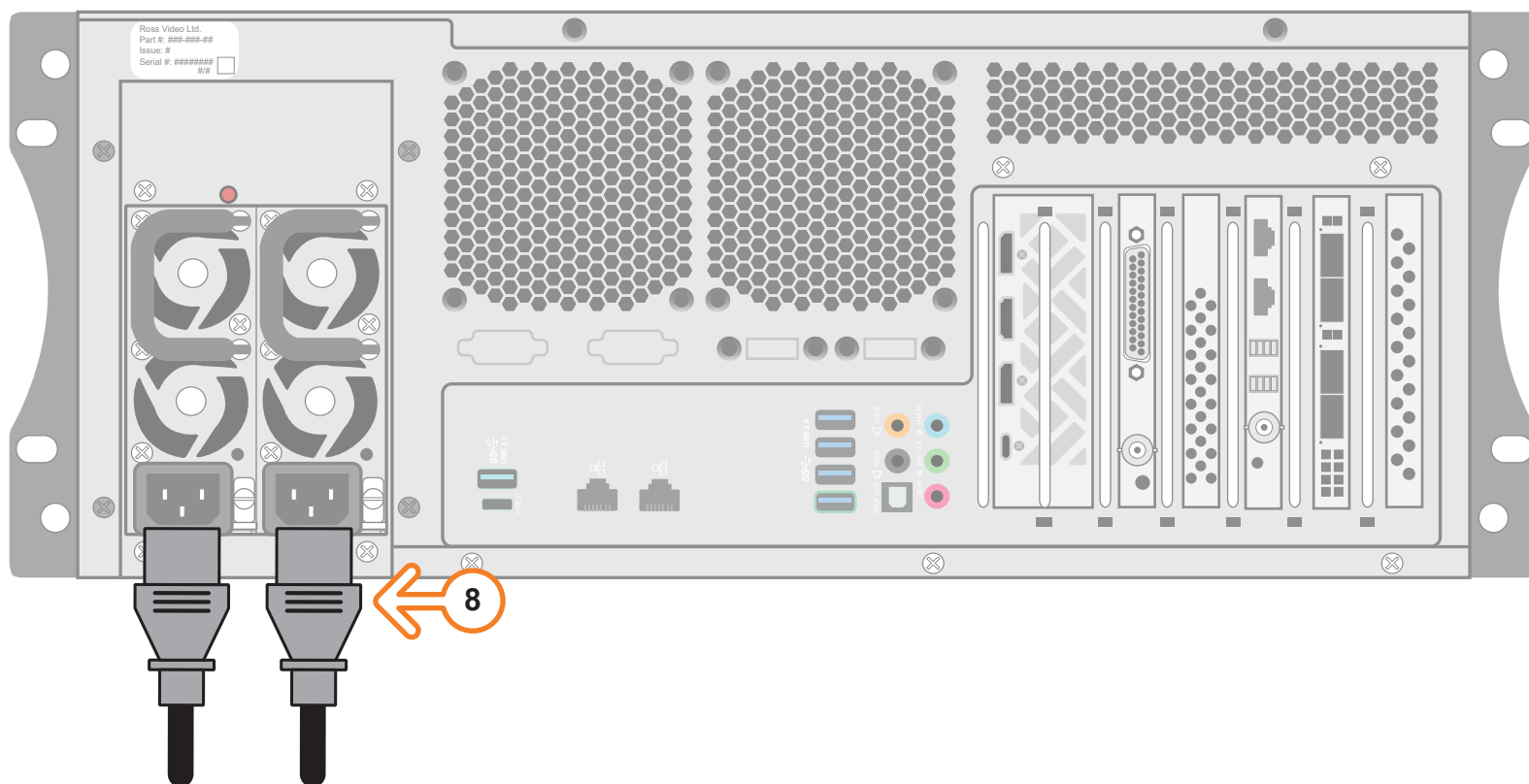
- 1 Attach the handles to the front rack-mount tabs by aligning the handle with the round holes and fastening from the rear with the supplied screws.  
Use the supplied Rack Mount Kit to mount the Voyager system in a 19" EIA equipment rack.  
*For information on installing the Voyager chassis in a rack, see the provided document “Installing the Chassis in a Rack”.*
- 2 Plug an Ethernet cable from your Local Area Network into one of the **Ethernet** ports.  
*Voyager systems can run standalone or accept a connection to a production network. The network connection is also used for the RossTalk / Smart GPI feature.*
- 3 Plug the supplied Keyboard into a **USB** port.
- 4 Plug the supplied Mouse into a **USB** port.
- 5 Connect a monitor (customer supplied) to any of the three display ports (a).  
*A monitor may also be connected to the USB-C port (b). When using display ports, ensure the correct display port to DVI adapters are used (DVI-D or DVI-I).*

*KVM extenders (customer supplied) are required when the Voyager system monitor, keyboard, and mouse are located remotely from the rack room.*

- 6 Use CAT-6 UTP Ethernet cables to connect the Frame Lock connectors of each Voyager engine in a multiple display network. It does not matter which connector you use. Make the master node in the network the timing master to control the timing on all other nodes.  
If possible, set up an isolated 10 Gbps network using the secondary network interfaces available in Voyager machines.
- 7 Insert a small form-factor pluggable (SFP) (customer supplied) into SFP cage 1 and attach the necessary networking cable.
- 8 If using redundancy, insert a small form-factor pluggable (SFP) (customer supplied) into SFP cage 2 and attach the necessary networking cable.

*Continued on other side...*

# Getting Started continued

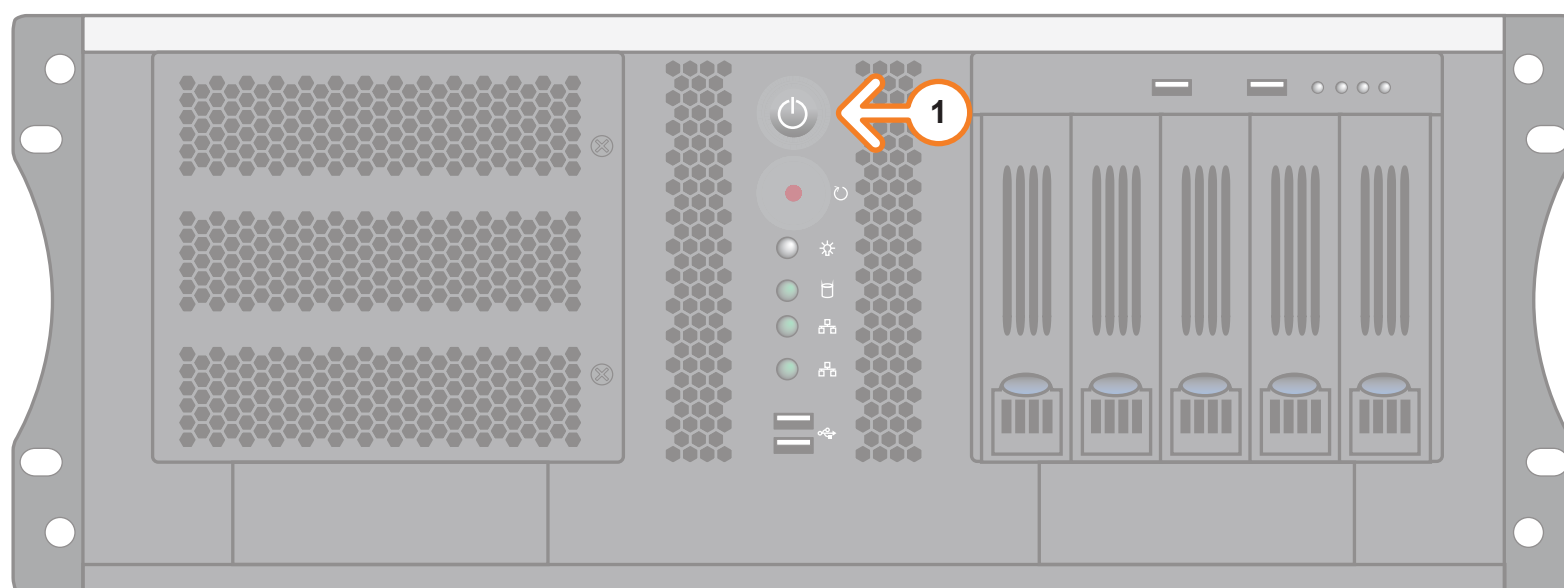


- 8 Connect power cords from the **AC Ports** on the Voyager system to the mains power.

Voyager system power supplies are auto-sensing and can use either 110 VAC or 220 VAC.

? Need Help?

Technical Support:  
 1-844-652-0645 (North America)  
 +800 1005 0100 (International)  
 Email: [techsupport@rossvideo.com](mailto:techsupport@rossvideo.com)



## To launch Voyager:

- 1 Press the **Power** button on the front of the Voyager system.  
*Ross Video recommends shutting down Voyager systems from the Windows operating system.*
- 2 Click the Voyager user account icon on the desktop.
- 3 Log onto the system using the following credentials:  
**Username:** Voyager  
**Password:** beyondinfinity
- 4 Launch Voyager from the **Start** menu.

### For information on...

- setting up Voyager, see the *Voyager Setup Guide* available in the C:\Archive folder
- maintenance of the Voyager system, see the *Voyager Maintenance Guide* in the C:\Archive folder